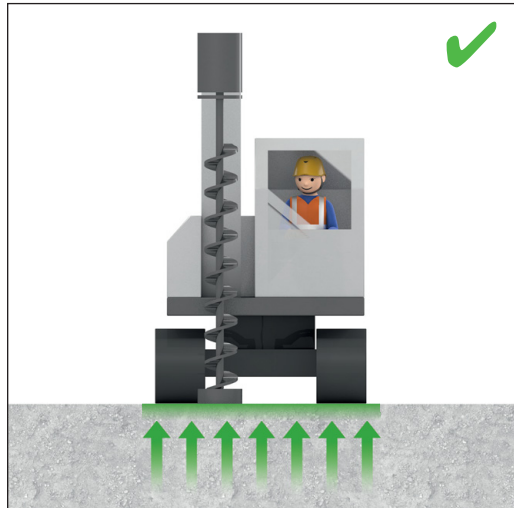
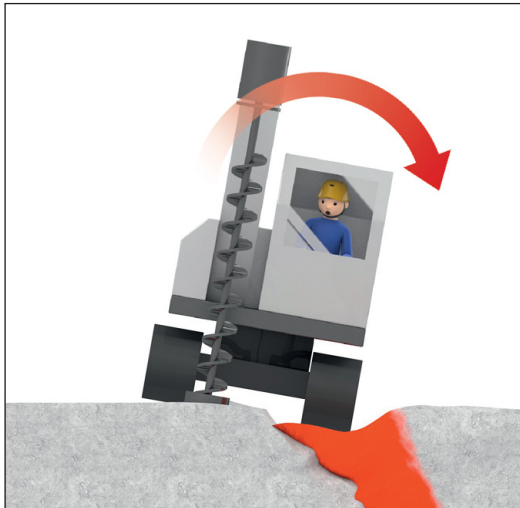
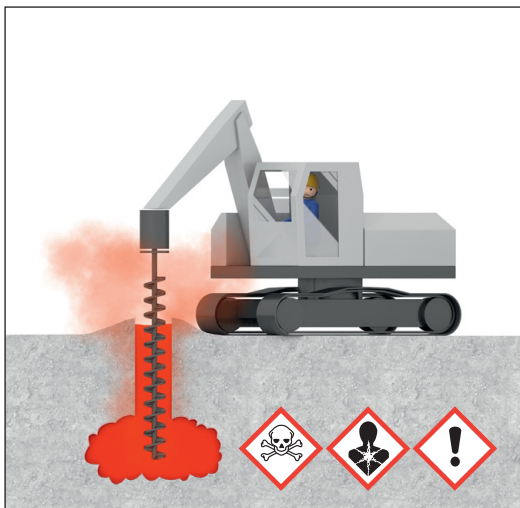


Radovi sa strojevima za bušenje u posebnoj niskogradnji



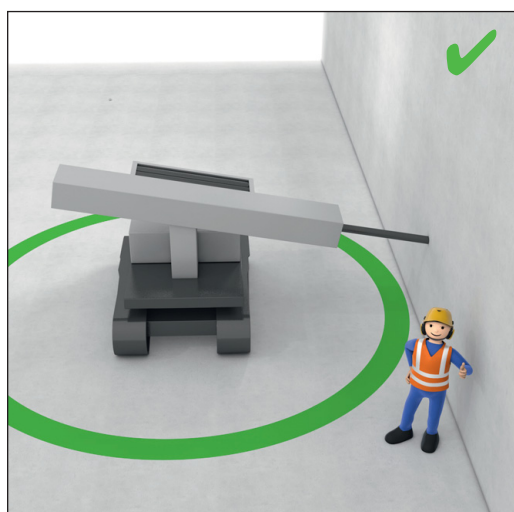
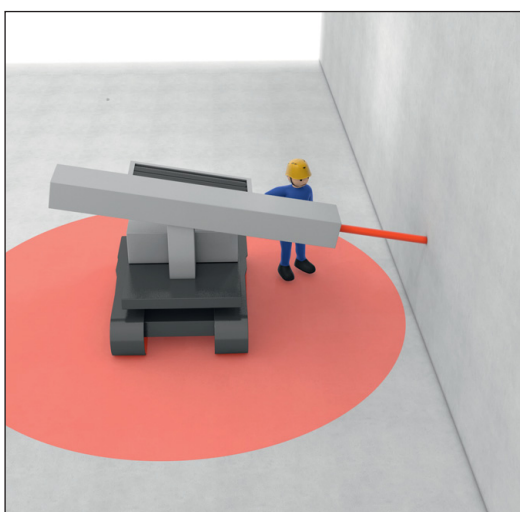
Upotrebljavajte stabilno postavljene strojeve



U slučaju opasnosti, prekinite s radovima

Napustite područje opasnosti

Prijavite opasnost



U slučaju opasnosti, zaustavite stroj

Koristite automatsko navođenje kraka

Održavajte razmak